

Valuemation Dashboards

BENEFITS

Valuemation Dashboards allow you to

- Obtain a summarized overview of all your IT data
- Get a picture of your current situation more quickly and reliably
- Minimize risks due to lack of information
- Monitor and analyze mission-critical KPIs more easily
- Make well-founded, reliable statements on trends based on historical data
- Make better-informed strategic and operational decisions.

To be able to assess the performance and efficiency of your IT services, you should always keep an eye on critical key performance indicators (KPIs). Prompt, timely access to constantly updated information is a key prerequisite for being able to monitor and control your business workflows in essentially real time. Valuemation Dashboards will let you quickly detect trends, make forecasts and, if necessary, take corrective actions.

The Challenges in IT Controlling

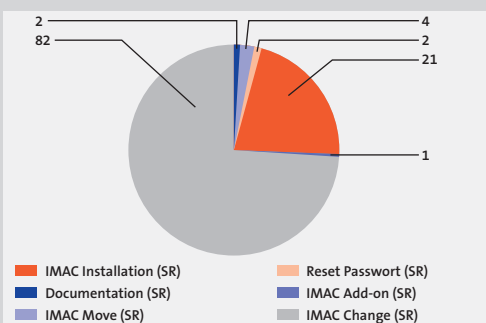
What exactly is your starting point for managing your IT? How can you obtain an updated overview of your IT performance? Are you able

to make detailed measurements of your IT services and proactively take charge of them should the need arise? Are you able to make decisions based on real-time information and daily updated operating figures? It's often the case that the

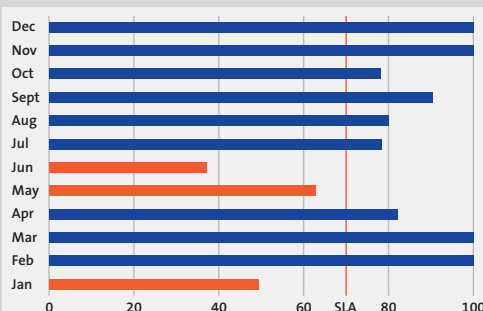
Graphical Display in Dashboards



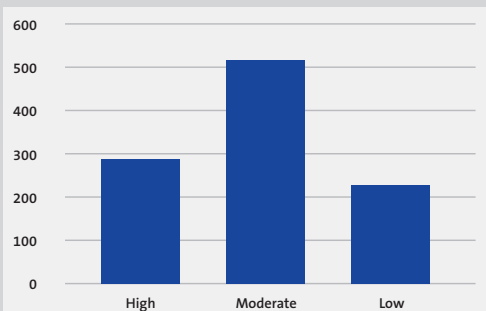
Top 5 Cost Centers – Annual Trends



Service Requests Sorted by Ticket Type



Tickets Resolved within SLA



Tickets by Importance/Urgency

sheer volume of accumulated data causes you to lose sight of the truly critical issues. What decision-makers really need and want is a simplified view that focuses on fundamental, core issues. They want to be able to use summarized, historical data along with current KPIs to detect ongoing trends and use all this input to determine the correct course of action.

Personalized Dashboards

Valuemotion Dashboards consolidate and summarize the large, distributed data volumes available in Valuemotion. ITIL®-compliant KPIs are readily available out-of-the-box. These dashboards are easy and intuitive to use. The role-based rights model lets you configure personalized dashboards, allowing both specialists and end users to customize the views to suit their respective preferences. Valuemotion lets you display your KPIs as bar charts, pie charts or line graphs as well as other views that have been especially designed for the use in dashboards. This means your personnel get exactly those KPIs that relate to their work.

Easy Integration

Best of all, the Valuemotion Dashboards module is an extremely lean application. It's a browser-based application featuring the latest web technology that allows it to be quickly and easily set up on the client side – without first having to install any special software. At the same time, you can also easily integrate Valuemotion Dashboards into an existing portal (Intranet/Extranet/Internet).

Valuemotion Dashboards let you consolidate and summarize data from various Valuemotion modules and graphically display it so that you can readily analyze it. You can benefit from even greater added value with the following Valuemotion applications:

Valuemotion License Manager:

Lets you see at glance whether any software is over/under-licensed.

Valuemotion Incident/Problem Manager:

Gives you a real-time overview of the number and status of current job tickets according to their priority level.

Valuemotion Planning/Calculation Manager:

Lets you use historical data to track the chronological trend of your planned costs vis-à-vis your actual costs, allowing you to take timely corrective measures.

With Valuemotion Dashboards, you be able to monitor your IT with helpful, informative ITIL®-compliant KPIs. The consolidated graphical summaries of key information will give you a quick overview of the performance, quality and costs of your IT services. You'll stay focused on the critical KPIs, be able to promptly detect important trends and use this knowledge to make better business decisions.

KEY FACTS

Valuemotion Dashboards let you analyze, monitor and control your IT processes and services more efficiently in the following ways:

- *You'll have consolidated, summarized real-time data sourced directly from Valuemotion.*
- *You'll be able to access selected ITIL®-compliant KPIs and best practices.*
- *You'll be able to view helpful graphical depictions of summarized KPIs.*
- *You'll enjoy using an intuitive application that allows you to assemble customized dashboards displaying the information that really matters to you.*

The Valuemotion Dashboards module can be easily integrated into Valuemotion applications or your already existing portals.